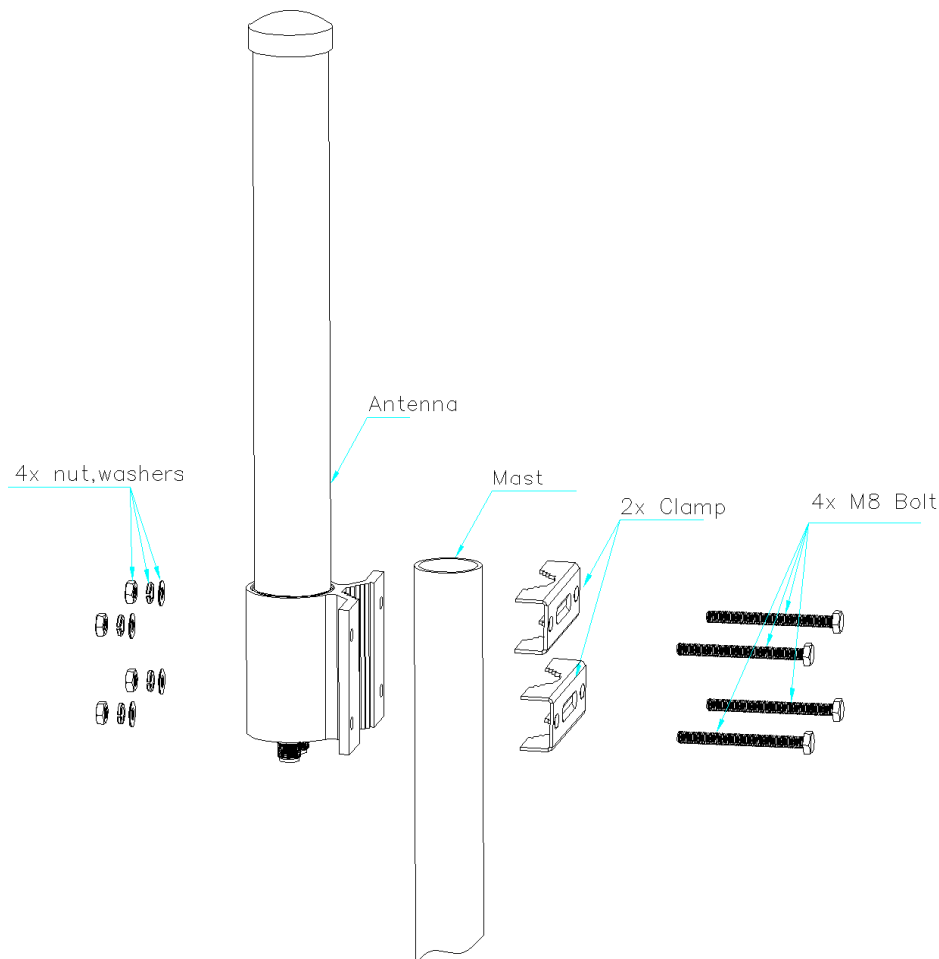


## MIMO Omni Antenna Assembly Instructions



Step 1: Open the box and check the items with the exact quantities below:

Antenna	1	PCS
M8 Bolt	4	PCS
Clamp	2	PCS
M8 Nut	4	PCS
M8 Flat washer	4	PCS
M8 Spring washer	4	PCS

Step 2: Take turns to use the mounting accessories to fasten the antenna to the mast according to the above illustration.

Step 3: Ground the antenna according to the National Electrical Code.

Step 4: Under some conditions, this antenna may not prevent electrocution. Users should keep antenna away from any overhead wires. If antenna contacts a power line, any initial protection could fail at any time. IF ANTENNA NEARS ANY OVERHEAD WIRES, IMMEDIATELY LET GO, STAY AWAY, AND CALL UTILITY COMPAN.

---

### **SANNY TELECOM EQUIPMENT CO., LTD**

Address: Room 201 Building 1, Wanyang Industrial Park, No.82 Xiaotang Industrial Avenue,  
Shishan Town, Nanhai District, Foshan City 528223, Guangdong Province, China

Tel: +86 757 8766 0070

Fax: +86 757 8766 0500

Email: sales@sannytelecom.com

Website: www.sannytelecom.com